



# Power Supply Installation Guide

---

**Phasetronics Inc. dba Motortronics  
1600 Sunshine Drive  
Clearwater, Florida 33765  
[www.motortronics.com](http://www.motortronics.com)**

© 2020 by Phasetronics, all rights reserved

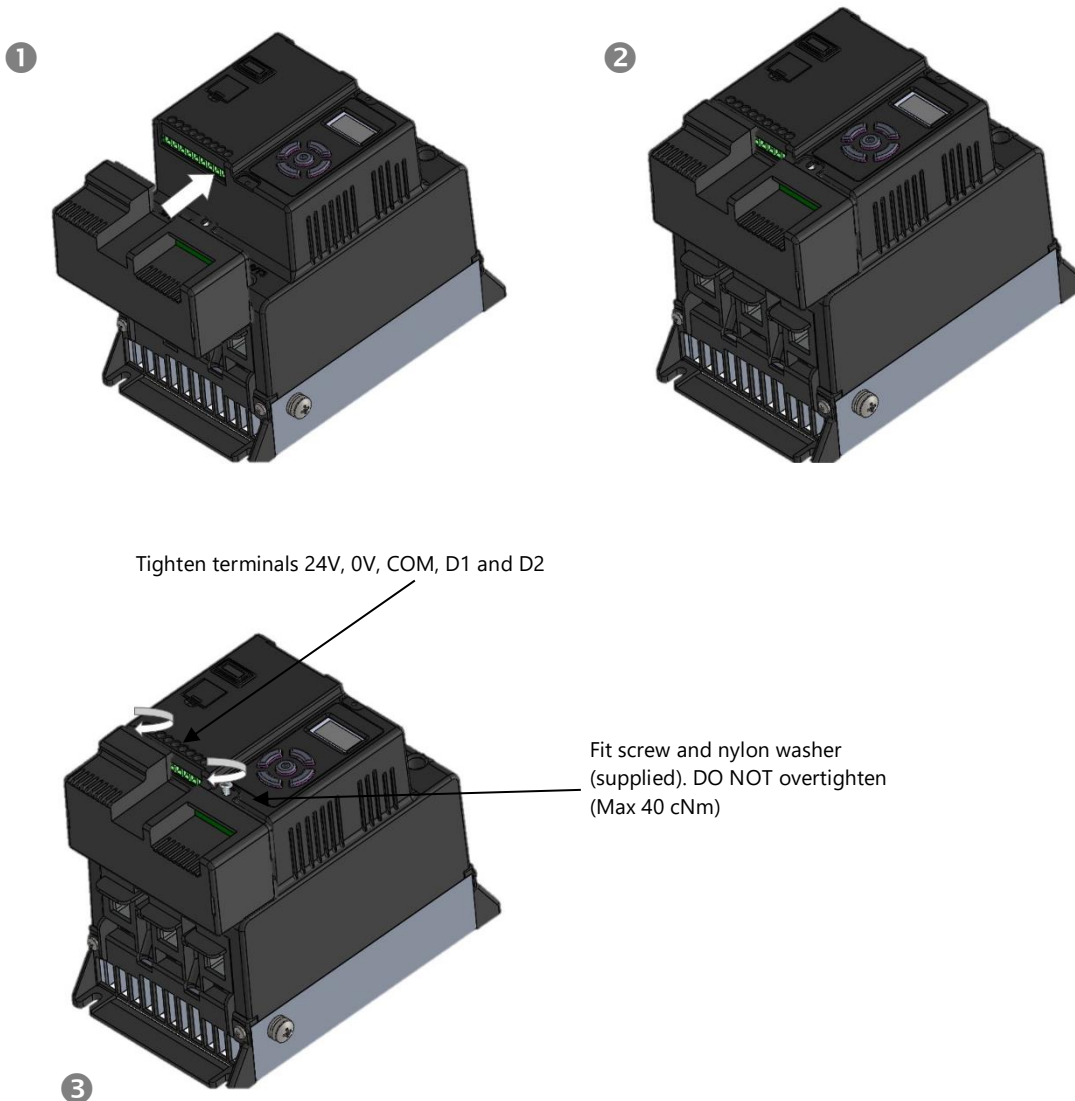
Copyright subsists in all Phasetronics Inc. deliverables including magnetic, optical and/or any other soft copy of these deliverables. This document may not be reproduced, in full or in part, without written permission. Enquiries about copyright of Phasetronics Inc. deliverables should be made to Phasetronics Inc. Ltd. If, by permission of the copyright owner, any part of this document is quoted, then a statement specifying the original document shall be added to the quotation. Any such quotation shall be according to the original (text, figure or table) and may not be shortened or modified.

## Power Supply (VMX-AGY-020 / VMX-AGY-021)

VMX-AGY-020 and VMX-AGY-021 are dedicated mains power supply for the agility soft start. In addition to allowing for mains control voltage operation, the power supply also allows for mains voltage digital control (D1/D2).

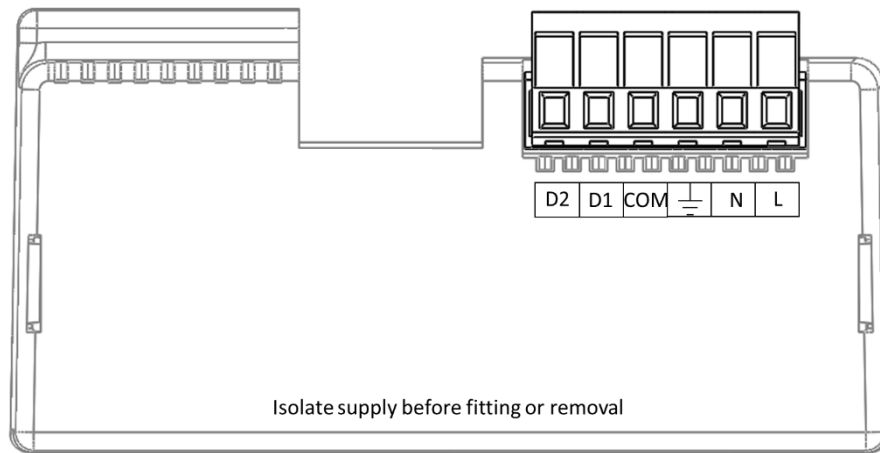
### Fitting

Ensure terminals 24V, 0V, COM, D1 and D2 are fully open before installing power supply as shown below:




When the VMX-AGY-020 or VMX-AGY-021 installation is complete, control supply, D1 and D2 are provided on the power supply rather than the agility main unit

## Connections



## Control Terminal Functions

Terminal	Description	Default	Function Selectable	Note
L	Control Supply Live (+Us)	-	No	#1
N	Control Supply Neutral -(Us)	-	No	
	Mains supply Earth	-	No	
COM	Digital Inputs Common	-	No	
D1	Digital Input 1	-	Yes	#2
D2	Digital Input 2	-	Yes	#2
13/14	Main Contactor Control (Run Relay)	-	No	#3
23/24	Top of Ramp Relay	-	No	#3

#1 110Vac or 230Vac, 47 – 63Hz

#2 The voltage applied to the digital inputs D1 and D2 must be the same as the supply voltage

#3 250Vac, 2A, Cos $\phi$  =0.5



